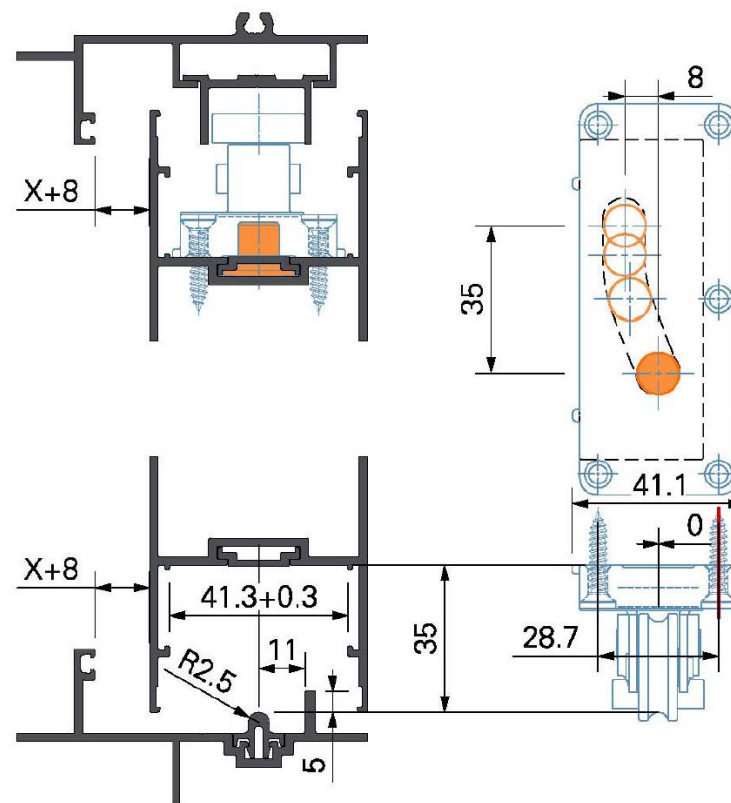


Inowa平移推拉门



运行原理

Innovation **no water** no **air**=Inowa

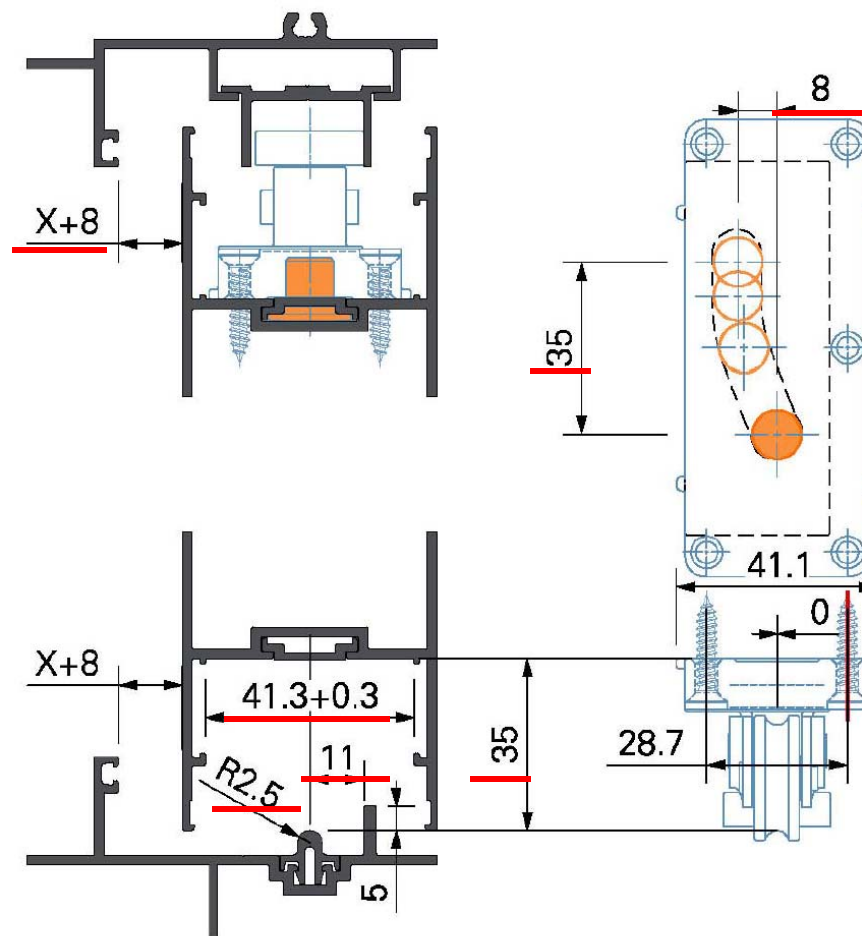


Inowa平移推拉门



2.运行原理

Innovation **no water** no **air**=Inowa

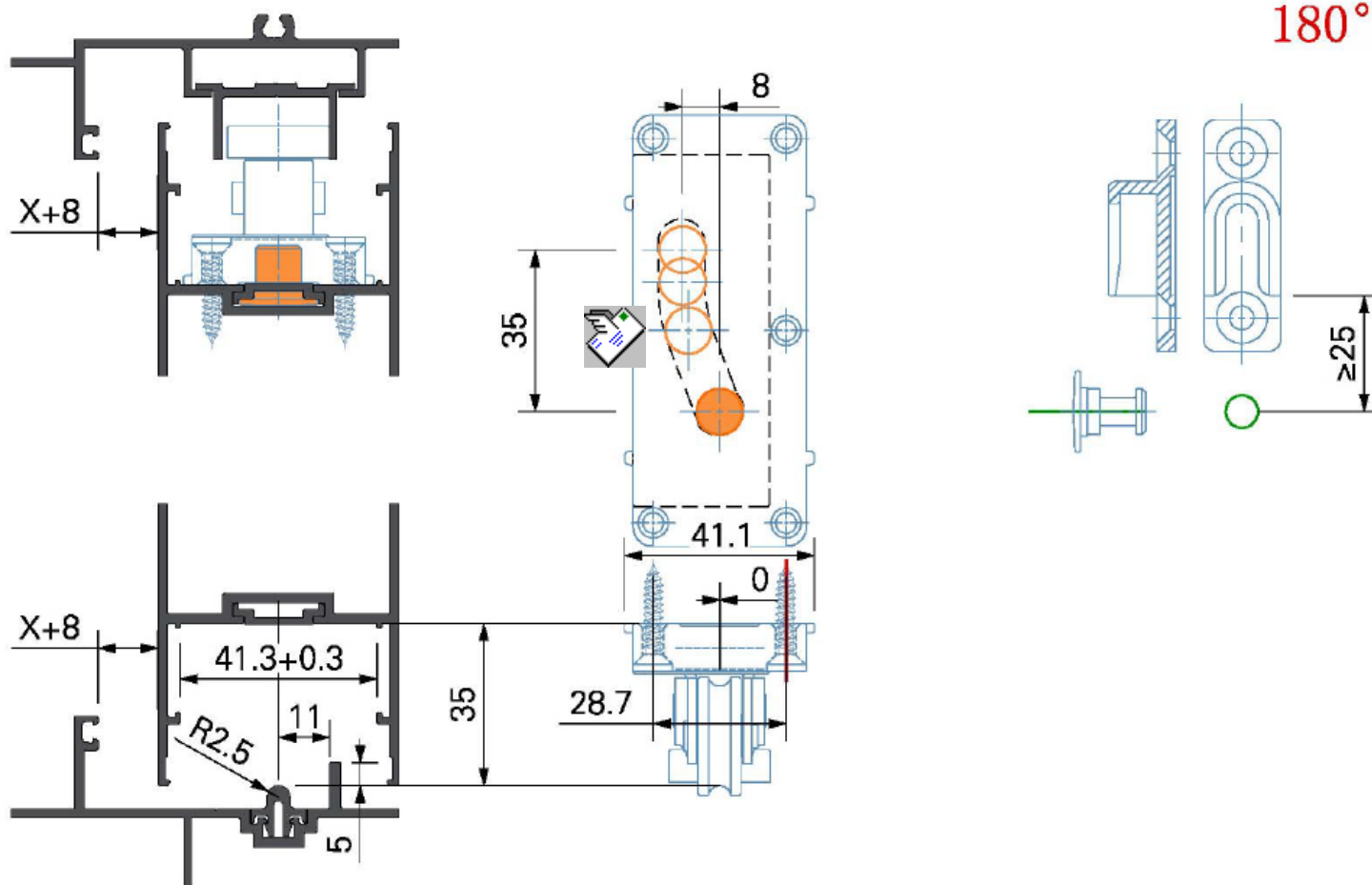


Inowa平移推拉门



2.运行原理

Innovation **no water** no **air**=Inowa

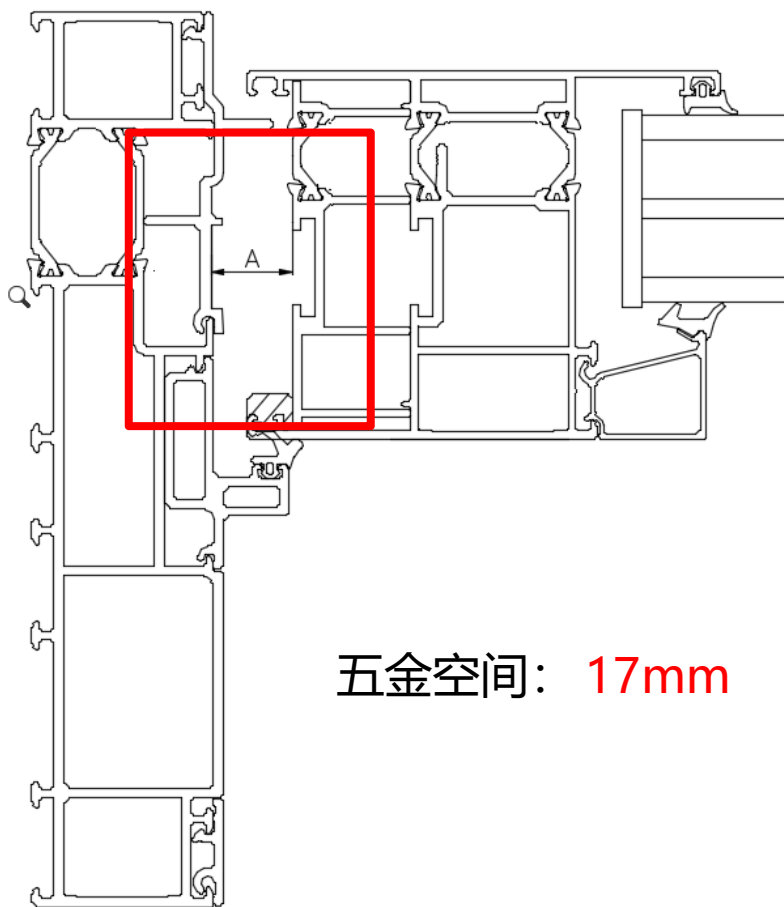


Inowa平移推拉门

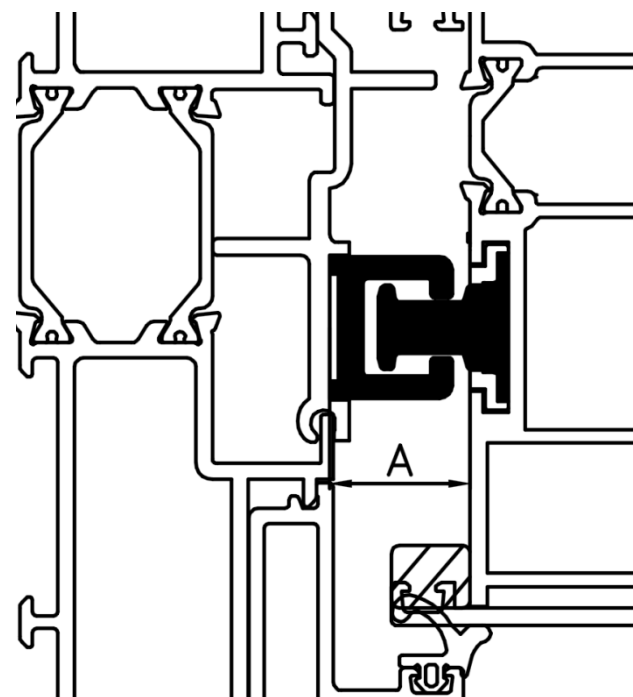


修改节点注意事项:

- 1.锁闭侧扇C槽口表面到框锁块安装面的距离（执手侧五金活动空间）



五金空间: 17mm



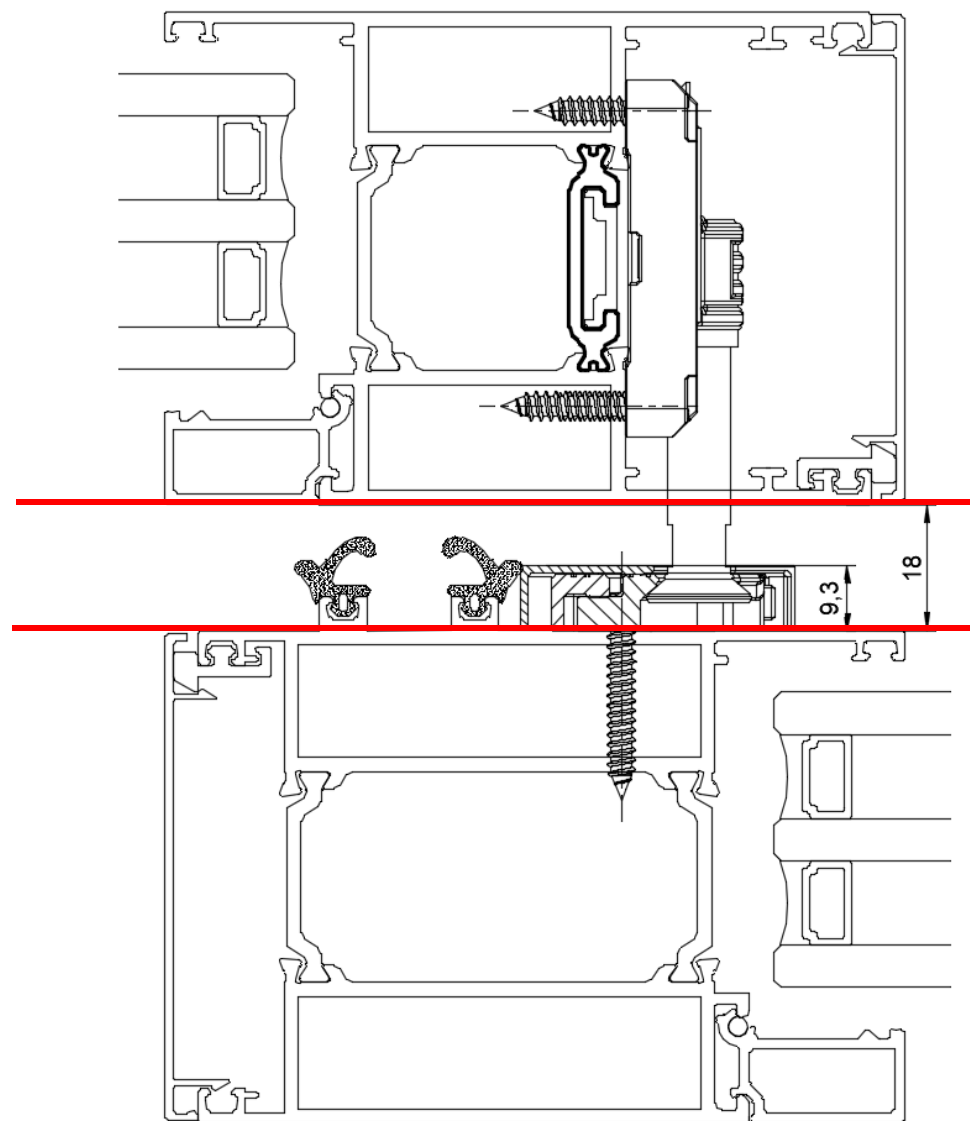
Inowa平移推拉门



修改节点注意事项:

2.两扇在勾边处的间距

勾边间距: **18mm**

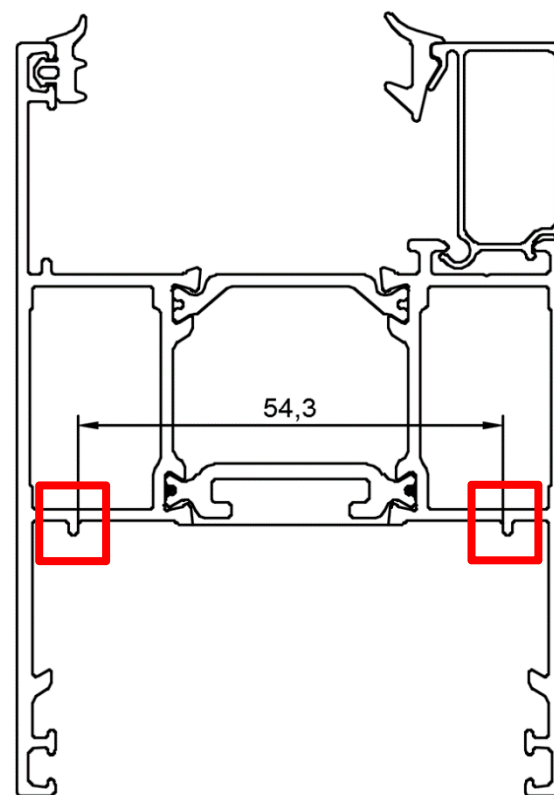
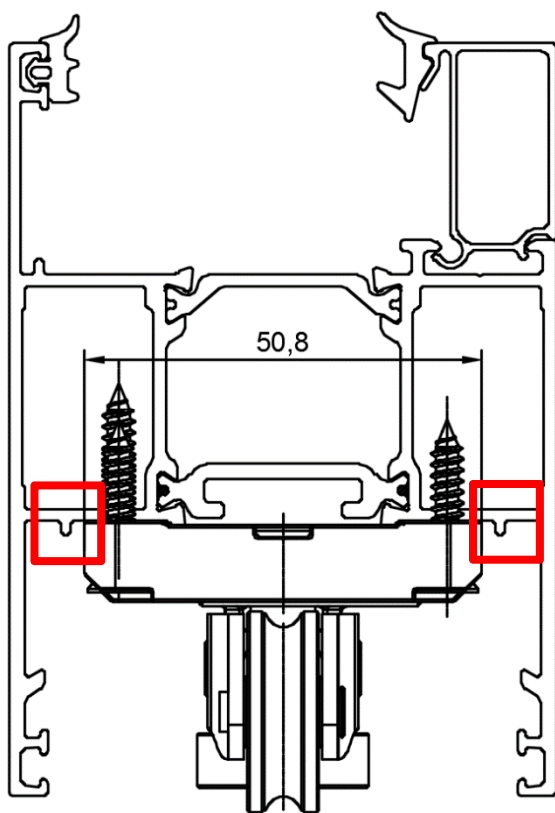


Inowa平移推拉门



修改节点注意事项:

3.扇槽口两侧的定位凸起间距

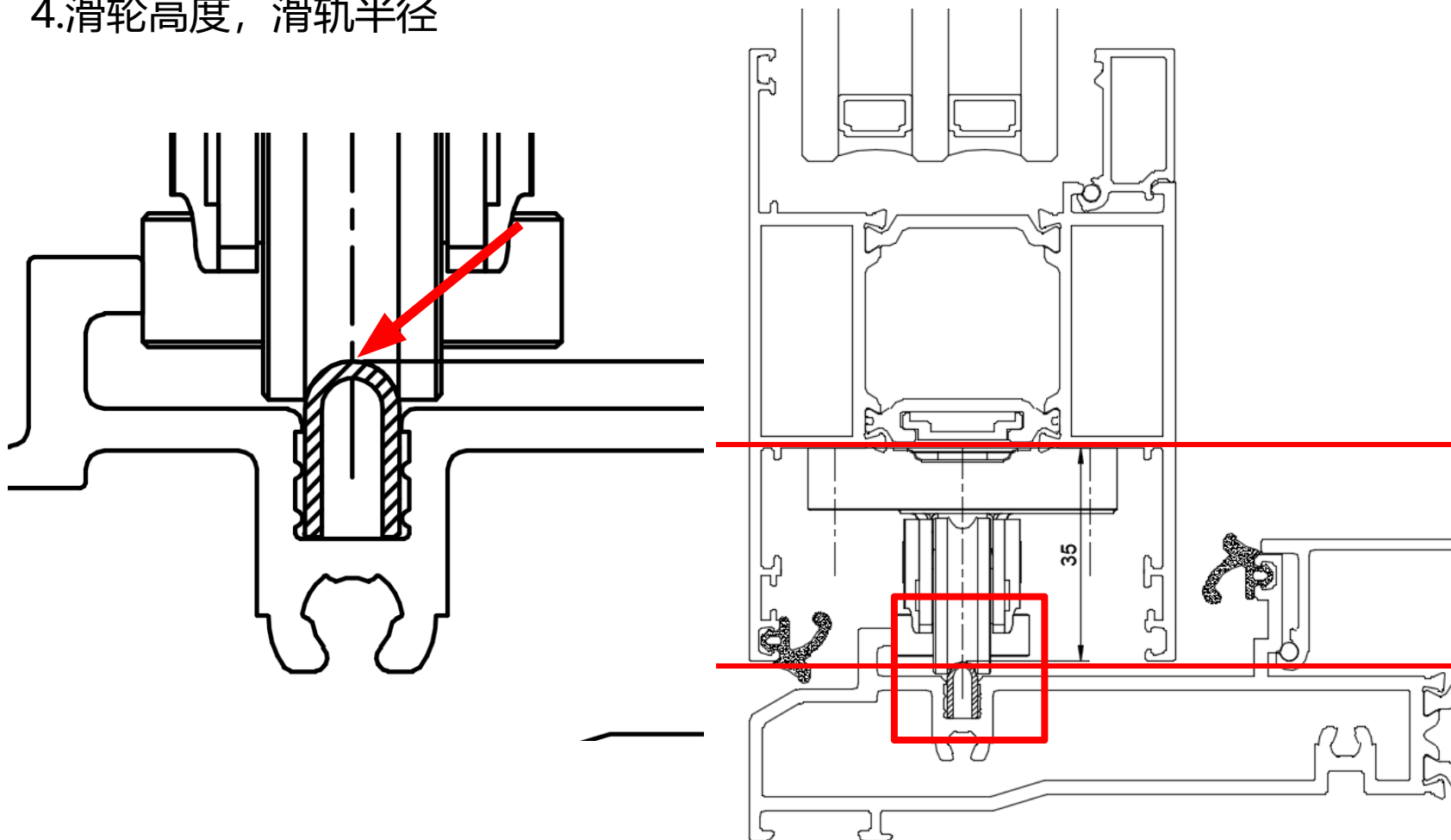


Inowa平移推拉门



修改节点注意事项:

4. 滑轮高度, 滑轨半径

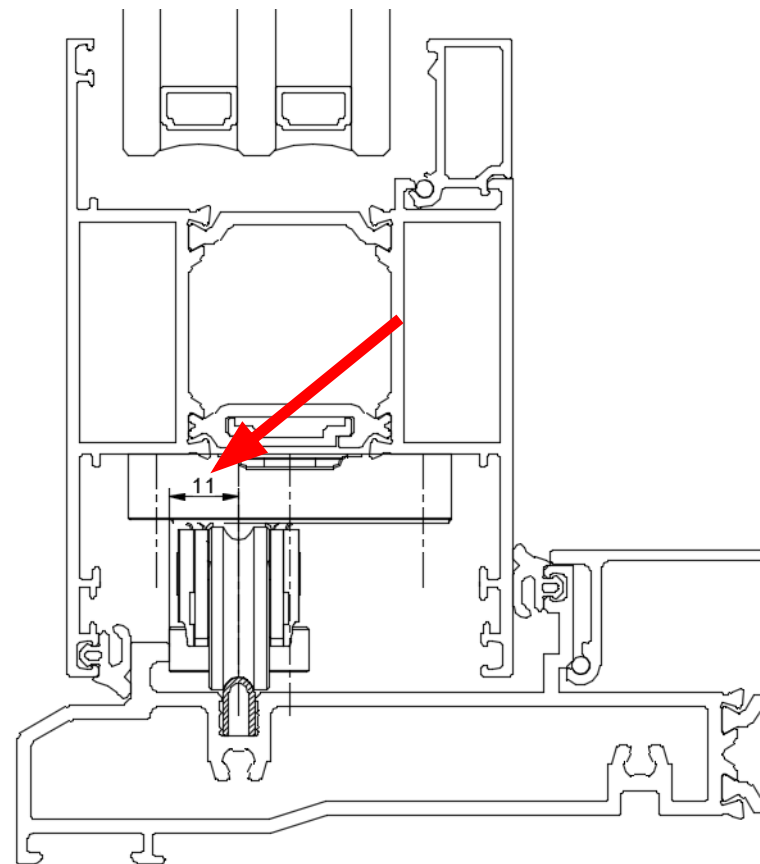
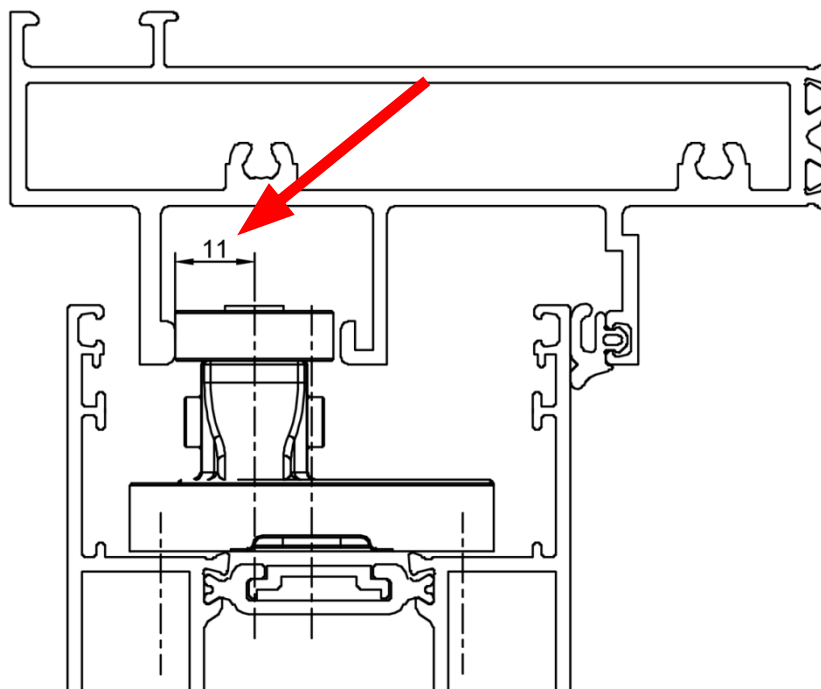


Inowa平移推拉门



修改节点注意事项:

5. 横向滑轮中心距离型材筋距离

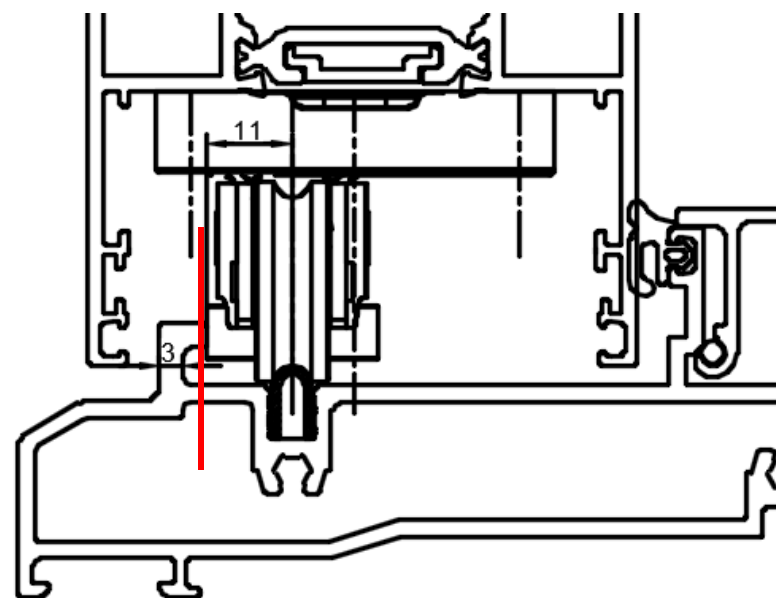
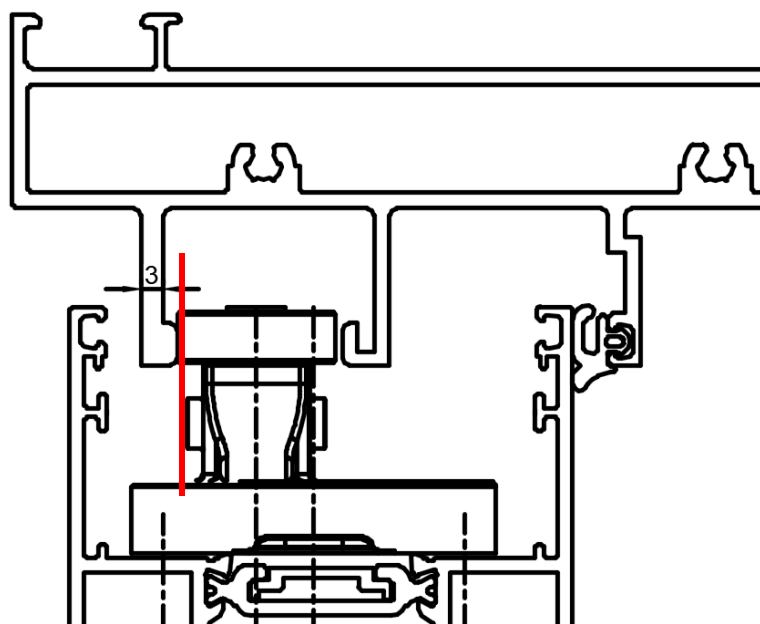


Inowa平移推拉门



修改节点注意事项:

5. 横向滑轮中心距离型材筋距离



Inowa平移推拉门



修改节点注意的**重点**:

1. 执手侧五金空间: **17mm**
2. 扇勾边间距: **18mm**
3. 扇上定位凸起间距: 41mm五金=**41.3mm**; 51mm五金=**54.3mm**。
4. 滑轮高度: **35mm**
5. 滑轨半径: **2.5mm**
6. 横向滑轮中心距离型材筋距离: **11mm**